

Attachments Full Line-Up

Best In Class Durability, Reliability
& Performance



DAEMO

DAEMO ENGINEERING CO., LTD.

Constant Innovation is our Passion

For over three decades, we have constantly developed future oriented hydraulic attachments to meet changing attachment market requirements.

Always with our passion in mind, we work with customers, end-users and suppliers to produce innovative solutions and to achieve customer satisfaction as quickly and efficiently as possible. Our continuous efforts on R&D, vast field experience and producing know-how characterize our quality products and secure our position as one of the leading hydraulic attachment manufacturers in Korea.

This is how we constantly innovate ourselves and keep our passion alive.

2020

Launching Smart Factory

2019

Listed on Kosdaq stock market

2016

Established a branch office in India

2014

Chosen as “World Class 300 Company” by Small Medium Business Administration

2013

Awarded Presidential Prize for Excellent Contribution on Korean Construction Machinery Industry.

2011

Awarded the prize of USD 30 million export.

2010

Acquisition of “Strong Exporter Certificate” from Industrial Bank of Korea

2007

Acquisition of “ISO14001” & Awarded the prize of USD 20 million export.

2003

Established a branch office in China and Europe

2000

Established a branch office in California, USA.

1998

Awarded Presidential Prize for Excellent Machinery

1995

Acquired “CE” Certification from TUV in Germany

1992

OEM Agreement with Hyundai Heavy Industries & Development Non-Acumulator Type Breaker

1989

Founding of Daemo Engineering Co., Ltd.





Constant Passion



Quality Management System



Customer Satisfaction

CONTENTS

BREAKER	04	ORANGE GRAPPLE	18
alicon Breaker			
EUREKA Breaker		SORTING GRAB / RAKE	19
SHEAR	10	CLAMSHELL BUCKET	20
Scrap Shear (Long Body Type)			
Shear (Short Body Type)		MAGNET	21
CRUSHER & PULVERIZER	12	RIPPER	22
Fixed Crusher			
Rotating Crusher		COMPACTOR	23
Rotating Pulverizer		QUICK COUPLER	24
MULTI PROCESSOR	15	Quick Coupler	
Multi Processor		Quick Coupler (Triple Safety)	
Multi Processor (Quick Change)		MATERIAL HANDLER	26
CAR DISMANTLER	17		

alicon Breaker



FEATURES

- New alicon series breaker became Lighter, Stronger and more Powerful than ever.
- Enlarged the diameter of T/Bolt improved its durability.
- Changed the hose connecting port from Split Flange structure In/Out port to New Adaptor type port (Prevent bolt breakage and oil leakage : B06~B1000).
- Switched Box Housing to Bending design for more durability.
- Redesigned chisel pin has improved durability.
- Enlarged chisel's diameter improved more powerful impact.
- Anti Blank Firing system increased the life of breaker (Chisel Pins, T/Bolts, F/Head, etc).
- More options : Anti Blank Firing On/Off valve, TPC system (2 stages stroke valve), Internal Relief Valve, BPM adjust Valve, Provision Hole for underwater works and Auto Grease System.

New alicon¹⁾
Top Box Type
(Low noise)

Top Box Type
(Low noise)

1) B145, B215, B235

* Compatible with all types of brackets.

SPECIFICATIONS

Description		Unit	B06	B10	B20	B30	B40	B50	B60	B70
Suitable Excavator		ton	0.5-1.2	0.5-1.5	1-2.5	2-4	3-4.5	3-8	4-8	5-8
		lb	1,102-2,645	1,102-3,307	2,205-5,512	4,409-8,818	6,614-9,921	6,614-17,637	8,818-17,637	11,023-17,637
Top Box Type	Operating Weight	kg	68	115	150	180	224	333	375	431
		lb	150	254	331	397	494	734	827	950
Overall Length		mm	932	1,110	1,239	1,334	1,408	1,603	1,635	1,805
		inch	36.7	43.7	48.8	52.5	55.4	63.1	64.4	71.1
Side Type	Operating Weight	kg	-	80	100	130	162	271	291	340
		lb	-	176	220	287	357	597	642	750
Overall Length		mm	-	964	1,080	1,145	1,192	1,560	1,620	1,657
		inch	-	38.0	42.5	45.1	46.9	61.4	63.8	65.2
Chisel Out Diameter		mm	40	40	45	53	62	70	75	78
		inch	1.6	1.6	1.8	2.1	2.4	2.8	3.0	3.1
Chisel Out Length		mm	233	272	326	360	390	463	506	500
		inch	9.2	10.7	12.8	14.2	15.4	18.2	19.9	19.7
Working Pressure		kgf/cm ²	70-120	70-110	80-120	80-120	100-140	100-140	100-140	100-140
		psi	996-1,707	996-1,565	1,138-1,707	1,138-1,707	1,422-1,991	1,422-1,991	1,422-1,991	1,422-1,991
Oil Flow		LPM	10-22	15-30	20-40	25-45	30-50	30-55	35-70	45-80
		GPM	2.6-5.8	4.0-7.9	5.3-10.6	6.6-11.9	7.9-13.2	7.9-14.5	9.2-18.5	11.9-21.1
Blow Rate (High Speed)	BPM	600-1,200	600-1,200	600-1,200	600-1,100	500-1,000	350-900 (450-1,000)	350-800 (450-1,100)	350-900 (450-1,000)	
Max. hydraulic input power		kW	4.3	5.4	7.8	8.8	11.4	12.6	16.0	18.3
		hp	5.8	7.3	10.6	12.0	15.5	17.1	21.8	24.9
Back Head	kgf/cm ²	9-12	9-12	9-12	9-12	9-12	9-12	9-12	9-12	
N2 Gas Pressure	psi	128-171	128-171	128-171	128-171	128-171	128-171	128-171	128-171	

* The specifications above are subject to change without prior notice for quality improvement.



Top Box Type
(Standard)

Top Split Type

Side Type

Skid Loader Type

Backhoe Type

B90	B145	B180	B215	B235	B250	B300	B360	B450	B650	B850	B1000
6-9	10-15	16-20	18-25	18-25	22-29	26-32	28-36	40-50	42-81	55-100	70-120
13,228-19,842	22,046-33,069	35,274-44,092	39,683-55,116	39,683-55,116	48,502-63,934	57,320-70,548	61,729-79,366	88,185-110,231	92,594-178,574	121,254-220,462	154,324-264,555
614	959	1,209	1,817	1,856	2,165	2,832	2,937	3,713	4,380	5,850	8,060
1,354	2,114	2,665	4,006	4,092	4,773	6,243	6,475	8,186	9,656	12,897	17,769
1,981	2,263	2,455	2,881	2,881	2,898	3,200	3,200	3,595	3,766	4,140	4,875
78.0	89.1	96.7	113.4	113.4	114.1	126.0	126.0	141.5	148.3	163.0	191.9
513	803	1,199	1,726	1,742	2,020	2,796	2,806	3,628	-	-	-
1,131	1,770	2,643	3,805	3,840	4,453	6,164	6,186	7,998	-	-	-
1,842	1,941	2,094	2,348	2,348	2,457	2,732	2,732	3,070	-	-	-
72.5	76.4	82.4	92.4	92.4	96.7	107.6	107.6	120.9	-	-	-
85	105	120	135	140	145	150	155	165	180	200	220
3.3	4.1	4.7	5.3	5.5	5.7	5.9	6.1	6.5	7.1	7.9	8.7
522	585	748	786	786	782	868	868	1,075	947	1,092	1,011
20.5	23.0	29.4	30.9	30.9	30.8	34.2	34.2	42.3	37.3	43.0	39.8
100-140	120-160	120-170	130-170	130-180	140-180	140-180	140-180	140-180	150-190	150-190	175-200
1,422-1,991	1,707-2,276	1,707-2,418	1,849-2,418	1,849-2,560	1,991-2,560	1,991-2,560	1,991-2,560	1,991-2,560	2,134-2,702	2,134-2,702	2,489-2,845
50-100	90-110	100-140	110-160	130-170	150-210	180-250	180-250	200-280	280-400	320-450	380-455
13.2-26.4	23.8-29.1	26.4-37.0	29.0-42.3	34.3-44.9	39.6-55.5	47.6-66.0	47.6-66.0	52.8-74.0	74.0-105.7	84.5-118.9	100.4-120.2
300-700	350-550	350-550	350-500	250-400	250-400	200-350	200-350	200-300	250-420	175-320	300-475
(550-950)	(500-750)	(500-850)	(450-600)	(350-500)	(350-500)	(300-480)	(300-480)	(300-450)	(300-500)	(210-400)	
22.9	28.8	38.9	44.4	50.0	61.8	73.5	73.5	82.4	124.2	139.7	148.7
31.1	39.2	52.9	60.4	68.0	84.0	99.9	99.9	112.0	168.9	189.9	202.2
9-12	13-16	9-12	11-14	11-14	8-11	8-11	8-11	11-13	13-16	13-16	8-11
128-171	185-228	128-171	156-199	156-199	114-156	114-156	114-156	156-185	185-228	185-228	114-156

EUREKA Breaker



FEATURES

- Solid Body Design : Through Bolts and other minor common parts have been removed to render higher durability and maximize impact power.
- Cylinder Liner : “Multi-Directional Oil Passages” have been applied to provide longer piston lifespan.
- Replaceable parts : easy to replace, easier to keep it running.
- High performance guaranteed : Each and every product has fully passed maximum load tests.
- All parts manufactured and assembled in Korea : integration of the most advanced technologies of DAEMO.
- Auto greasing unit is available for all models (optional).
- Waterjet port & inner line for scaling dust at mining, demolishing (optional).

SPECIFICATIONS

Description	Unit	E10	E20	E30	E40	E50		E70	E70S ¹⁾	E90
						3PIN	2PIN			
Suitable Excavator	ton	0.8-2.5	1.2-3	2.5-4.5	3-5.5	3-5.5	4-7	6-9	6-9	7-14
	lb	1,764-5,512	2,646-6,614	5,512-9,921	6,614-12,125	6,614-12,125	8,818-15,432	13,228-19,842	13,228-19,842	15,432-30,865
Solid Type	Operating Weight	kg	77	97	141	175	259	346	366	496
		lb	170	214	311	386	571	763	807	1,093
	Overall Length	mm	1,040	1,121	1,198	1,382	1,487	1,789	1,792	1,965
		inch	40.9	44.1	47.2	54.4	58.5	70.4	70.6	77.4
Side Type	Operating Weight	kg	75	87	125	134	214	266	-	423
		lb	165	192	276	295	472	586	-	933
	Overall Length	mm	927	1,006	1,092	1,176	1,276	1,504	-	1,666
		inch	36.5	39.6	43.0	46.3	50.2	59.2	-	65.6
Body diameter (A)	mm	Ø123	Ø133	Ø147	Ø167	Ø182	Ø192	Ø220	Ø240	
	inch	Ø4.8	Ø5.2	Ø5.8	Ø6.6	Ø7.2	Ø7.6	Ø8.7	Ø9.4	
Chisel Out Diameter (B)	mm	40	45	53	60	68	75	75	85	
	inch	1.6	1.8	2.1	2.4	2.7	3.0	3.0	3.3	
Chisel Out Length (C)	mm	297	321	325	375	428	507	477	564	
	inch	11.7	12.6	12.8	14.8	16.9	20.0	18.8	22.2	
Working Pressure	kgf/cm ²	90-120			100-130	110-140		120-150	120-150	130-160
	psi	1,280-1,707			1,422-1,849	1,565-1,991		1,707-2,134	1,707-2,134	1,849-2,276
Oil Flow	LPM	15-30	20-40	25-50	30-60	40-70		50-90	50-90	60-100
	GPM	4.0-7.9	5.3-10.6	6.6-13.2	7.9-15.9	10.6-18.5		13.2-23.8	13.2-23.8	15.9-26.4
Blow Rate	BPM	800-1,400	700-1,200	600-1,100	500-1,000	500-900		400-800	400-800	400-800
Max. hydraulic input power	kW	6	8	10	13	16	16	22	22	26
	hp	8	11	13	17	22	22	30	30	36
Back Head N2 Gas Pressure	kgf/cm ²	16	16	16	16	16	16	16	16	16
	psi	228	228	228	228	228	228	228	228	228

* The specifications above are subject to change without prior notice for quality improvement.

1) For scaling



Solid Body Type



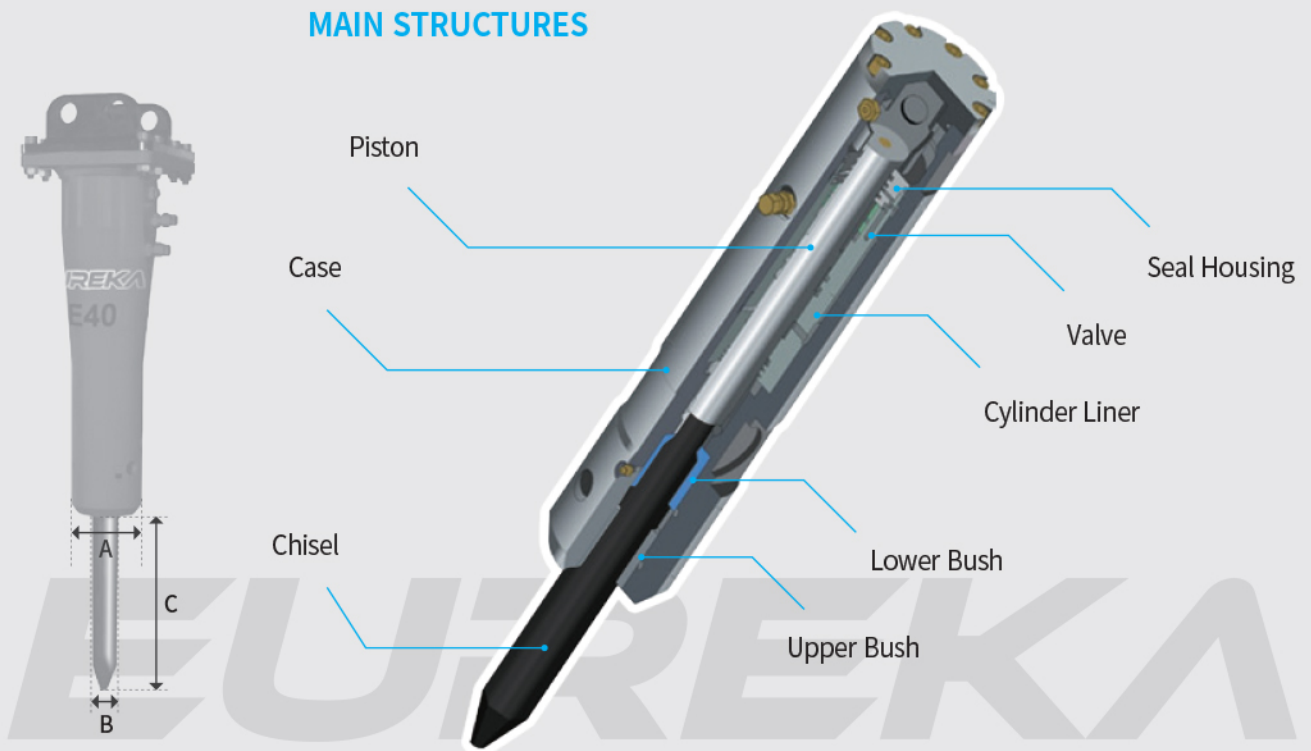
Side Type



Split Type

* Compatible with all types of brackets (Box type, Skid loader, etc.)

MAIN STRUCTURES



Scrap Shear (Long Body Type)



FEATURES

- Hardox 400 for heavy duty body.
- Detroit Cutter.
- Maximized cutting force.
- H-beam and I-beam can be cut in a single cut.
- Easier cutter replacement.
- Speed-up valve accelerates work speed (Standard).



SPECIFICATIONS

Description	Unit	Guide Block Type			
		DMS350	DMS400	DMS550X	DMS700
Operating Weight	kg	3,550	5,316	6,435	7,716
	lb	7,826	11,720	14,187	17,011
Max. Opening Width	mm	672	710	802	896
	inch	26.5	28.0	31.6	35.3
Overall Length	mm	3,508	4,625	5,050	5,480
	inch	138.1	182.1	198.8	215.7
Max. Cutting Force	ton	660	1,150	1,500	1,750
	lb	1,455,051	2,535,316	3,306,934	3,858,090
Max. Cutting Speed (Open / Close)	sec	4.6 / 4.2	5.5 / 5.3	9.7 / 5.8	8.2 / 4.9
	kgf/cm ²	350	300-380	300-380	300-380
Operating Pressure	psi	4,978	4,267-5,405	4,267-5,405	4,267-5,405
	LPM	180-350	250-450	270-600	350-800
Oil Flow Rate	GPM	47.6-92.5	66.1-118.9	71.3-158.5	92.5-211.3
	Excavator Class	ton	18-(2nd) 30-(3rd)	22-(2nd) 41-(3rd)	36-(2nd) 50-(3rd)
lb		39,683-(2nd) 66,139-(3rd)	48,502-(2nd) 90,390-(3rd)	79,366-(2nd) 110,231-(3rd)	92,594-(2nd) 160,937-(3rd)

Description	Unit	Guide Block Type			
		DMS350	DMS400	DMS550X	DMS700
H-Beam	mm	300X300	350X350	380X380	450X450
	inch	11.8X11.8	13.8X13.8	15.0X15.0	17.7X17.7
I-Beam	mm	350X150	400X175	600X190	600X190
	inch	13.8X5.9	15.7X6.9	23.6X7.5	23.6X7.5
Solid Round	mm	60	70	80	90
	inch	2.4	2.8	3.1	3.5
Channel Plate	mm	425X100X10	425X100X10	425X100X10	425X100X10
	inch	16.7X3.9X0.4	16.7X3.9X0.4	16.7X3.9X0.4	16.7X3.9X0.4
Angle Plate	mm	200X200X20	200X200X25	250X250X25	250X250X30
	inch	7.9X7.9X0.8	7.9X7.9X1.0	9.8X9.8X1.0	9.8X9.8X1.2

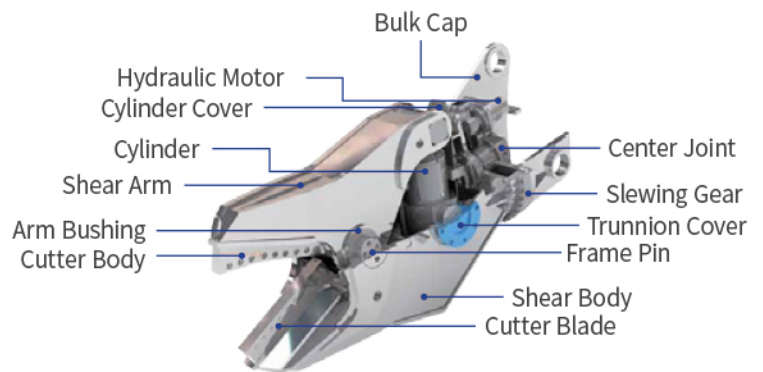
* The specifications above are subject to change without prior notice for quality improvement.

Shear (Short Body Type)






FEATURES

- 360° workable direction.
- H-beam and I-beam can be cut in a single cut.
- Easier cutter replacement.
- Speed-up valve accelerates work speed (standard).
- Light weight and High durability.



SPECIFICATIONS

Description	Unit	None Guide Block Type	
		DMS250	DMS300
Operating Weight	kg	2,200	2,920
	lb	4,850	6,437
Max. Opening Width	mm	668	570
	inch	26.3	22.4
Overall Length	mm	2,353	2,410
	inch	92.6	94.9
Max. Cutting Force	ton	284	404
	lb	626,113	890,668
Max. Cutting Speed (Open / Close)	sec	2.0 / 2.4	1.9 / 2.5
Operating Pressure	kgf/cm ²	350	350
	psi	4,978	4,978
Oil Flow Rate	LPM	200~250	250~300
	GPM	52.8~66.1	66.1~79.3
Excavator Class	ton	22~27	27~33
	lb	48,502~59,525	59,525~72,753

Description	Unit	None Guide Block Type	
		DMS250	DMS300
 H-Beam	mm	150X150	200X200
	inch	5.9X5.9	7.9X7.9
 I-Beam	mm	200X125	300X150
	inch	7.9X4.9	11.8X5.9
 Solid Round	mm	40	50
	inch	1.6	2.0
 Channel Plate	mm	250X90X13	380X100X16
	inch	9.8X3.5X0.5	15.0X3.9X0.6
 Angle Plate	mm	100X100X10	150X150X15
	inch	3.9X3.9X0.4	5.9X5.9X0.6

* The specifications above are subject to change without prior notice for quality improvement.

Fixed Crusher



FEATURES

- Durability with wear-resistant tooth material.
- Low noise, less vibration design.
- Dual purpose : crushing concrete and cutting steel bars.
- Tooth replacement and speed-up valve (standard).
- Welding tooth type and Bolting tooth type available.



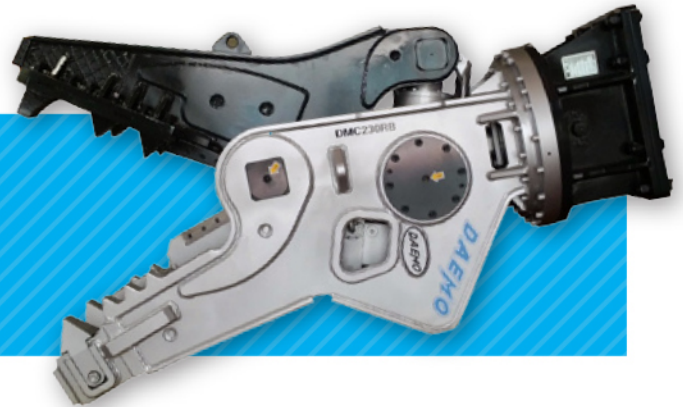
SPECIFICATIONS

Description	Unit	DMC140	DMC140B ¹⁾	DMC180	DMC180B ¹⁾	DMC210	DMC210B ¹⁾	DMC300	DMC300B ¹⁾
Operating Weight	kg	1,314	1,350	1,418	1,450	1,926	1,980	2,550	2,600
	lb	2,897	2,976	3,126	3,197	4,246	4,365	5,622	5,732
Max. Opening Width	mm	612		728		784		915	
	inch	24.1		28.7		30.9		36.0	
Overall Length	mm	1,965	1,945	2,050	2,020	2,222	2,222	2,351	2,380
	inch	77.4	76.6	80.7	79.5	87.5	87.5	92.6	93.7
Crushing Force(End)	ton	53		55		62		81	
	lb	116,845		121,254		136,687		178,574	
Operating Pressure	kgf/cm ²	350		350		350		350	
	psi	4,978		4,978		4,978		4,978	
Oil Flow Rate	LPM	170~220		180~230		200~250		250~300	
	GPM	44.9~58.2		47.6~60.8		52.8~66.1		66.1~79.3	
Excavator Class	ton	13~20		16~22		20~30		27~40	
	lb	28,660~44,092		35,274~48,502		44,092~66,139		59,525~88,185	

* The specifications above are subject to change without prior notice for quality improvement.

1) Bolting tooth type.

Rotating Crusher



FEATURES

- 360° workable direction.
- Workable on narrow building spaces or noise regulated environments.
- Speed-up valve accelerates work speed (standard).
- Moving arm tooth replaceable as standard.
- Welding tooth type and Bolting tooth type available.



Bolting Type Tooth : Wearable part can be easily replaced.

SPECIFICATIONS

Description	Unit	DMC230R	DMC230RB ¹⁾	DMC330R	DMC330RB ¹⁾
Operating Weight	kg	2,250	2,300	3,050	3,100
	lb	4,960	5,071	6,724	6,834
Max. Opening Width	mm	780		890	
	inch	30.7		35.0	
Overall Length	mm	2,500	2,480	2,660	2,685
	inch	98.4	97.6	104.7	105.7
Crushing Force(End)	ton	60		73	
	lb	132,277		160,937	
Operating Pressure	kgf/cm ²	350		350	
	psi	4,978		4,978	
Oil Flow Rate	LPM	200~250		250~300	
	GPM	52.8~66.1		66.1~79.3	
Excavator Class	ton	20~30		29~43	
	lb	44,092~66,139		63,934~94,799	

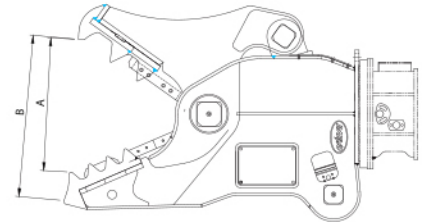
* The specifications above are subject to change without prior notice for quality improvement.
 1) Bolting tooth type.

Rotating Pulverizer



FEATURES

- Enlarged cutter length & Optimized crushing power.
- Cover plate for protecting cylinder.
- Speed-up valve accelerates work speed (standard).
- Exchangeable wear parts: arm, body tooth, cutter.
- Hardox 400 for high durability.



SPECIFICATIONS

Description	Unit	DRP145	DRP185	DRP235	DRP335
Operating Weight	kg	1,350	1,700	2,200	3,150
	lb	2,976	3,748	4,850	6,945
Max. Opening Width(A)	mm	640	740	800	960
	inch	25.2	29.1	31.5	37.8
Max. Opening Width(B)	mm	790	900	960	1,138
	inch	31.1	35.4	37.8	44.8
Overall Length	mm	1,845	1,966	2,177	2,353
	inch	72.6	77.4	85.7	92.6
Crushing Force(End)	ton	55	85	110	125
	lb	121,254	187,393	242,508	275,578
Operating Pressure	kgf/cm ²	350	350	350	350
	psi	4,978	4,978	4,978	4,978
Oil Flow Rate	LPM	170~220	180~220	220~280	250~300
	GPM	44.9~58.1	47.6~58.1	58.1~74.0	66.0~79.3
Open/Close time	sec	1.8 / 1.4	1.8 / 1.7	1.6 / 1.8	2.3 / 2.36
Excavator Class	ton	13~20	18~28	24~32	30~43
	lb	28,660~44,092	39,683~61,729	52,911~70,548	66,139~94,798

* The specifications above are subject to change without prior notice for quality improvement.

Multi Processor



FEATURES

- Hydraulic rotating motor provides improved mobility.
- Crushing concrete and cutting steel as switching arms.
- 360° full rotating.
- Speed-up valve applied (standard).



SPECIFICATIONS

Description	Unit	DMP140CMS	DMP140PM	DMP140SM	DMP230CMS	DMP230SM	DMP330CMS	DMP330CML	DMP330SM
		Crusher	Pulverizer	Shear	Crusher	Shear	Crusher	Crusher	Shear
Operating Weight	kg	1,350	1,350	1,450	1,730	1,810	2,850	2,910	3,000
	lb	2,976	2,976	3,197	3,814	3,990	6,283	6,415	6,614
Max. Opening Width	mm	867	885	484	900	486	1,110	1,220	613
	inch	34.1	34.8	19.1	35.4	19.1	43.7	48.0	24.1
Overall Length	mm	1,967	1,981	1,875	2,044	2,247	2,474	2,546	2,508
	inch	77.4	78.0	73.8	80.5	88.5	97.4	100.2	98.7
Crushing/Cutting Force (Mid)	ton	70	76	124	90	119	150	133	215
	lb	154,324	167,551	273,373	198,416	262,350	330,693	293,215	473,994
Max. Cutting Force	ton	339	304	273	631	441	639	639	611
	lb	747,367	670,205	601,862	1,391,117	972,239	1,408,754	1,408,754	1,347,024
Operating Pressure	kgf/cm ²	350	350	350	350	350	350	350	350
	psi	4,978	4,978	4,978	4,978	4,978	4,978	4,978	4,978
Oil Flow Rate	LPM	170-220	170-220	170-220	200-250	200-250	250-300	250-300	250-300
	GPM	44.9-58.1	44.9-58.1	44.9-58.1	52.8-66.0	52.8-66.0	66.0-79.3	66.0-79.3	66.0-79.3
Excavator Class	ton	13-22	13-22	13-22	20-32	20-32	30-43	30-43	30-43
	lb	28,660-48,502	28,660-48,502	28,660-48,502	44,092-70,548	44,092-70,548	66,139-94,799	66,139-94,799	66,139-94,799

* The specifications above are subject to change without prior notice for quality improvement.

Multi Processor (Quick Change)



FEATURES

- Replaceable arms and tooth (Crusher, Shear, Demolition and Pulverizer).
- Best material 'Hardox Hituf' and 'Hardox 400'.
- Required Arm can be replaced within 10 minutes (Quick Change).
- Speed-up valve increases work efficiency (Standard).



Crusher



Demolition



Pulverizer



Shear



SPECIFICATIONS

Description	Unit	DMP200Q				DMP300Q			
		Crusher	Demolition	Pulverizer	Shear	Crusher	Demolition	Pulverizer	Shear
Operating Weight	kg	2,183	2,190	2,200	2,037	2,900	2,820	2,826	2,698
	lb	4,813	4,828	4,850	4,491	6,393	6,217	6,230	5,948
Crushing Force (Tip)	ton	59	60	60	85	85	85	85	120
	lb	130,073	132,277	132,277	187,393	187,393	187,393	187,393	264,555
Crushing Force (Mid)	ton	82	98	92	140	120	140	130	190
	lb	180,779	216,053	202,825	308,647	264,555	308,647	286,601	418,878
Max. Cutting Force	ton	325	368	341	341	411	411	411	411
	lb	716,502	811,301	751,776	751,776	906,100	906,100	906,100	906,100
Max. Opening Width	mm	791	727	843	393	875	940	945	480
	inch	31.1	28.6	33.2	15.5	34.4	37.0	37.2	18.9
Upper Jaw Width	mm	127	127	310	99	80	80	316	120
	inch	5.0	5.0	12.2	3.9	3.1	3.1	12.4	4.7
Lower Jaw Width	mm	360	360	380	320	426	500	490	352
	inch	14.2	14.2	15.0	12.6	16.8	19.7	19.3	13.9
Cutter Length	mm	180+180	200	200	250+200	200+200	200	200	300+250
	inch	7.1+7.1	7.9	7.9	9.8+7.9	7.9+7.9	7.9	7.9	11.8+9.8
Operating Pressure	kgf/cm ²	350	350	350	350	350	350	350	350
	psi	4,978	4,978	4,978	4,978	4,978	4,978	4,978	4,978
Oil Flow Rate	LPM	120-200	120-200	120-200	120-200	200-250	200-250	200-250	200-250
	GPM	31.7-52.8	31.7-52.8	31.7-52.8	31.7-52.8	52.8-66.0	52.8-66.0	52.8-66.0	52.8-66.0
Open/Close time	sec	2.0/2.1	2.0/2.1	2.0/2.1	2.0/2.1	2.0/2.3	2.0/2.3	2.0/2.3	2.0/2.3
Rotation Pressure	kgf/cm ²	160	160	160	160	160	160	160	160
	psi	2,276	2,276	2,276	2,276	2,276	2,276	2,276	2,276
Rotation Flow	LPM	36-40	36-40	36-40	36-40	36-40	36-40	36-40	36-40
	GPM	9.5-10.6	9.5-10.6	9.5-10.6	9.5-10.6	9.5-10.6	9.5-10.6	9.5-10.6	9.5-10.6
Excavator Class	ton	18-30	18-30	18-30	18-30	28-43	28-43	28-43	28-43
	lb	39,683-66,139	39,683-66,139	39,683-66,139	39,683-66,139	61,729-94,799	61,729-94,799	61,729-94,799	61,729-94,799

* The specifications above are subject to change without prior notice for quality improvement.

Car Dismantler



FEATURES

- Clamp arm and 360° rotating cutter enables elaborate work.
- Speedy demolition without pre-process.
- Car dismantle work can performed by one machine.
- Engine pulling type available.

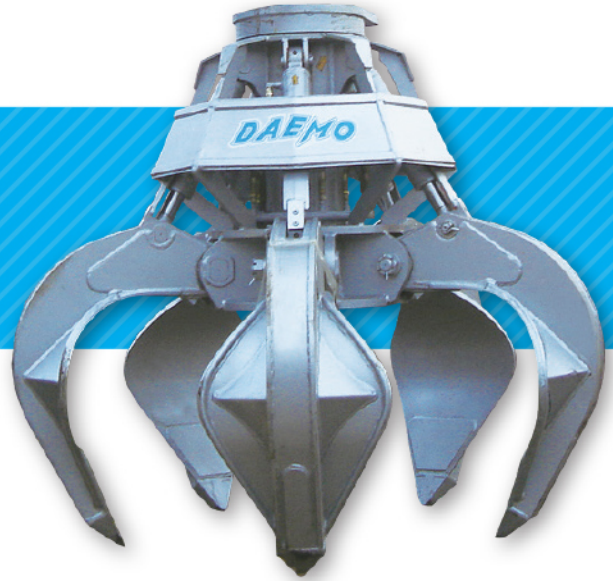


SPECIFICATIONS

Description	Unit	DMCP140R	DMCP140R (Engine Puller)	DMCP230R (option: 2motor)	DMCP300R
Rotation Type	-	Rotating Head type			
Operating Weight	kg	870	990	1,800	2,880
	lb	1,918	2,183	3,968	6,349
Max. Opening Width	mm	700	807	600	866
	inch	27.6	31.8	23.6	34.1
Max. Cutting Force	ton	49	-	170	303
	lb	108,027	-	374,786	668,001
Cutter Length	mm	225	-	225	225X2
	inch	8.9	-	8.9	8.9X2
Operating Pressue	kgf/cm ²	320	320	320	320
	psi	4,551	4,551	4,551	4,551
Oil Flow Rate	LPM	170~220	170~220	200~300	250~300
	GPM	44.9~58.1	44.9~58.1	52.8~79.3	52.8~79.3
Excavator Class	ton	13~18	13~18	20~28	27~33
	lb	28,660~39,683	28,660~39,683	44,092~61,729	59,525~72,753

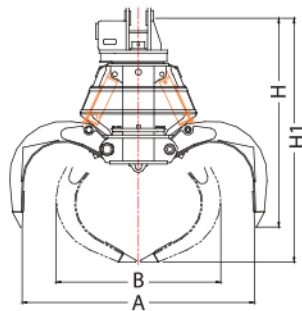
* The specifications above are subject to change without prior notice for quality improvement.

Orange Grapple



FEATURES

- Loading / Unloading metal scrap, waste and garbage.
- Pendulum type.
- Tine type : Half-sealed (Standard).
- Rotating type : Hydraulic.

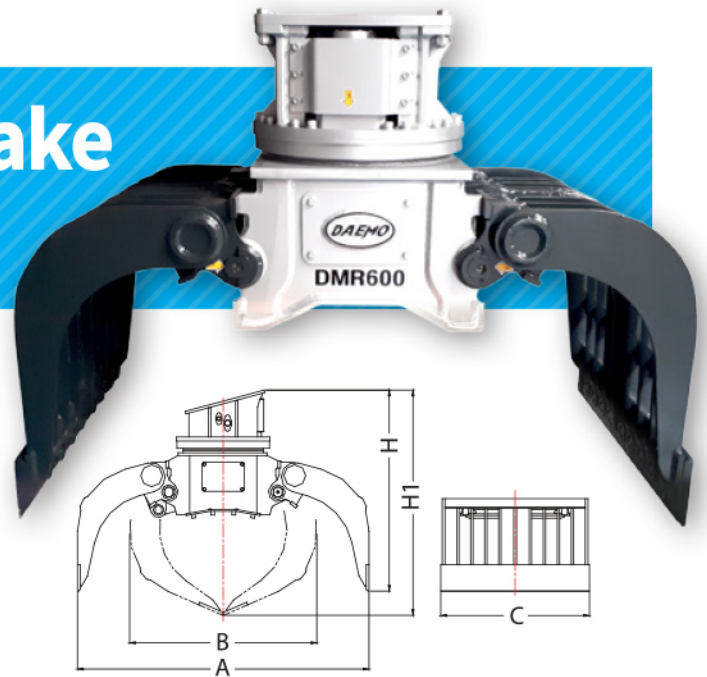


SPECIFICATIONS

Description	Unit	DMSG800	DMSG1000
Operating Weight	kg	1,200	1,420
	lb	2,646	3,131
Capacity	m ³	0.7	1.0
Max. Closing Force	ton	10.8	15
	lb	23,810	33,069
Max. Opening Width (A)	mm	1,820	2,000
	inch	71.7	78.7
Closing Width (B)	mm	1,290	1,498
	inch	50.8	59.0
Opening Length (H)	mm	1,630	1,615
	inch	64.2	63.6
Overall Length (H1)	mm	1,905	1,920
	inch	75.0	75.6
Excavator Class	ton	18~25	25~32
	lb	39,683~55,116	55,116~70,548
Standard Tines No.	ea	5	5

* The specifications above are subject to change without prior notice for quality improvement.

Sorting Grab / Rake



FEATURES

- Link type mounting bracket.
- Rotation option : fixed or hydraulic.
- Tooth replacement type.
- Powerful performance with two cylinders.

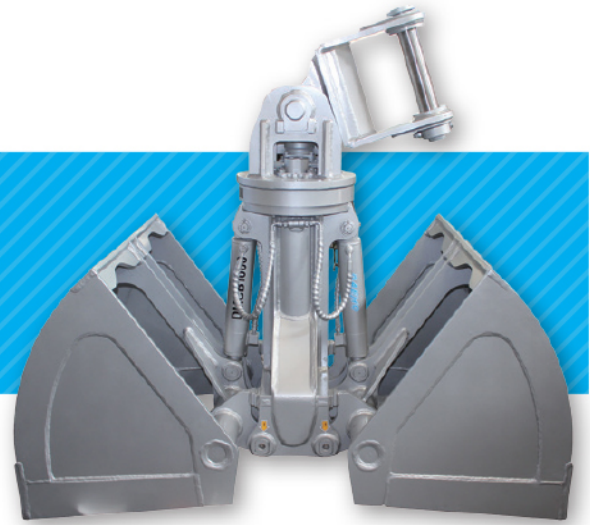


SPECIFICATIONS

Description	Unit	DMR100	DMR160	DMR300	DMR600	DMR800	DMR1000
Operating Weight	kg	330	460	550	970	1,300	2,200
	lb	728	1,014	1,213	2,138	2,866	4,850
Capacity	m ³	0.08	0.16	0.23	0.36	0.60	0.93
Max. Closing Force	ton	1.3	2.4	2.8	3.7	5.0	7.4
	lb	2,866	5,291	6,173	8,157	11,023	16,314
Max. Opening Width (A)	mm	1,192	1,490	1,600	1,790	2,180	2,445
	inch	46.9	58.7	63.0	70.5	85.8	96.3
Closing Width (B)	mm	678	810	987	1,210	1,356	1,485
	inch	26.7	31.9	38.9	47.6	53.4	58.5
Jaw Width (C)	mm	410	600	630	800	1,000	1,100
	inch	16.1	23.6	24.8	31.5	39.4	43.3
Height (H, Open)	mm	827	857	1,076	1,216	1,437	1,595
	inch	32.6	33.7	42.4	47.9	56.6	62.8
Overall Length (H1)	mm	938	1,006	1,247	1,379	1,682	1,900
	inch	36.9	39.6	49.1	54.3	66.2	74.8
Excavator Class	ton	2-4	5-9	7-12	14-20	18-30	26-43
	lb	4,409-8,818	11,023-19,842	15,432-26,455	30,865-44,092	39,683-66,139	57,320-94,799

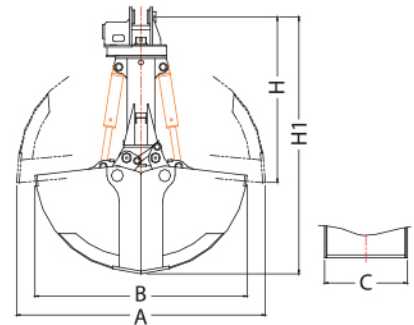
* The specifications above are subject to change without prior notice for quality improvement.

Clamshell Bucket



FEATURES

- Pendulum Type.
- Rotating Options :
 - Hydraulic Rotating Type, Free Rotating Type, Fixed Type Available.
- Tooth can be installed as Option.
- Standard Clamshell has no tooth.



SPECIFICATIONS

Description		DMCB800	DMCB1000	DMCB1200
Operating Weight	kg	980	1,420	1,600
	lb	2,161	3,131	3,527
Capacity	m ³	0.8	1.0	1.2
Max. Opening Width (A)	mm	2,027	2,027	2,027
	inch	79.8	79.8	79.8
Max. Closing Width (B)	mm	1,837	1,837	1,837
	inch	72.3	72.3	72.3
Jaw Width (C)	mm	800	1,100	1,400
	inch	31.5	43.3	55.1
Height (H, Open)	mm	1,442	1,442	1,442
	inch	56.8	56.8	56.8
Overall Length (H1)	mm	2,147	2,147	2,147
	inch	84.5	84.5	84.5
Min. Self Digging Force(Open Point)	kgf	5,705	5,705	-
Excavator Class	ton	18~25	25~32	32~38
	lb	39,683~55,116	55,116~70,548	70,548~83,776

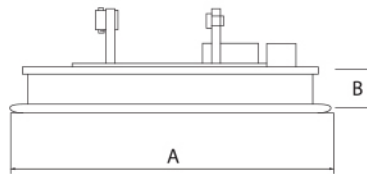
* The specifications above are subject to change without prior notice for quality improvement.

Magnet



FEATURES

- Extended operational area.
- High efficiency for loading / unloading metal scrap.
- Reduced cost of follow-up maintenance.
- Type options : fixed, link, knuckle and grapple.
- Convenient maintenance using hydraulic generator.



SPECIFICATIONS

Description	Unit	DMSL900	DMSL1000	DMSL1100	DMSL1200	DMSL1300	DMSL1500	DMSL1700	
Operating Weight	kg	800	1,050	1,300	1,600	1,800	2,200	2,600	
	lb	1,764	2,315	2,866	3,527	3,968	4,850	5,732	
Measurement	A	ø	900	1,000	1,100	1,200	1,300	1,500	1,700
		mm	300	300	300	300	300	300	300
	B	inch	11.8	11.8	11.8	11.8	11.8	11.8	11.8
Capacity	Iron Plate	kg	6,000	7,000	8,000	10,000	12,000	16,000	18,000
		lb	13,228	15,432	17,637	22,046	26,455	35,274	39,683
	Lump of Iron	kg	150	220	300	400	600	800	1,000
		lb	331	485	661	882	1,323	1,764	2,205
	Scrap	kg	100	180	220	300	400	600	800
		lb	220	397	485	661	882	1,323	1,764
Electric Current	A	80~120	100~120	130~160	140~160	160~180	200~220	220~250	
Power Consumption	kW	2.0~3.0	2.5~3.0	3.2~4.0	3.5~4.0	4.0~4.5	5.0~5.5	5.5~6.3	
Voltage	V	25	25	25	25	25	25	25	
Excavator Class	ton	14~20	20~30	20~30	20~30	30~35	35~45	45~60	
	lb	30,865~44,092	44,092~66,139	44,092~66,139	44,092~66,139	66,139~77,162	77,162~99,208	99,208~132,277	

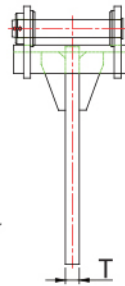
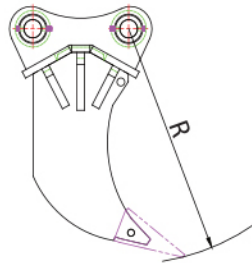
* The specifications above are subject to change without prior notice for quality improvement.

Ripper



FEATURES

- Scarify frost and hard ground prior to using a bucket.
- Used for removing stumps, roots or rebar.
- High strength and solid body.
- Single & Double points type available.



SPECIFICATIONS

Description	Unit	DMSR140	DMDR140	DMSR230	DMDR230	DMSR360	DMDR360	DMSR450	DMDR450
Point Option	-	Single	Double	Single	Double	Single	Double	Single	Double
Operating Weight	kg	230	310	390	580	770	1,100	770	1,100
	lb	507	683	860	1,279	1,698	2,425	1,698	2,425
Shank Thickness (T)	mm	60		70		80		80	
	inch	2.4		2.8		3.1		3.1	
Tip Radius (R)	mm	940		1,050		1,290		1,290	
	inch	37.0		41.3		50.8		50.8	
Excavator Class	ton	11~14		16~25		25~32		36~50	
	lb	24,251~30,865		35,274~55,116		55,116~70,548		79,366~110,231	

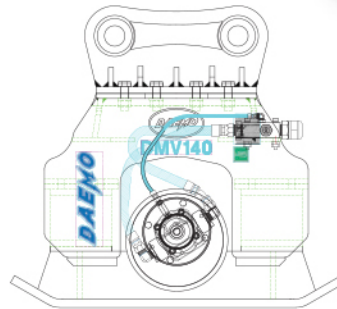
* The specifications above are subject to change without prior notice for quality improvement.

Compactor



FEATURES

- High compaction efficiency for ground, trench and slope.
- Requires breaker piping line (S/ACT) (additional).
- Control block system for easy & safe setting.
- Robust design with bending structure & hub type damper.



SPECIFICATIONS

Description		Unit	DMV50	DMV140	DMV230	DMV300
Max. Impulse Force		ton	2.3	3.7	7.5	11.0
		lb	5,071	8,157	16,535	24,251
Operating Weight		kg	342	624	850	1,282
		lb	754	1,376	1,874	2,826
Compact Area	Width	mm	450	650	750	900
		inch	17.7	25.6	29.5	35.4
	Length	mm	700	750	1,000	1,200
		inch	27.6	29.5	39.4	47.2
Flow Rate Range		LPM	30~55	90~110	130~170	180~250
		GPM	7.9~14.5	23.8~29.0	34.3~44.9	47.5~66.0
Max. Cycle per Minute		RPM	2,500	2,500	2,200	2,200
Operating Pressure		Kgf/cm ²	100~140	120~160	130~180	140~180
		psi	1,422~1,991	1,707~2,276	1,849~2,560	1,991~2,560
Excavator Class		ton	2~7	8~15	15~22	25~47
		lb	4,409~15,432	17,637~33,069	33,069~48,502	55,116~103,617

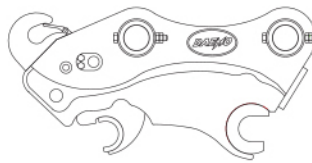
* The specifications above are subject to change without prior notice for quality improvement.

Quick Coupler



FEATURES

- Various applications with the wide Pin-to-Pin distance.
- Outstanding durability by using abrasion-resistant and high strength material.
- Safety valve integrated cylinder and manual safety pin.



Open Hook Type



Close Hook Type

SPECIFICATIONS

Description	Unit	DMQ16	DMQ27	DMQ35	DMQ50	DMQ70	DMQ80	DMQ140
Operating Weight	kg	31	38	40	74	85	94	180
	lb	68	84	88	163	187	207	397
Setting Pressure	Kgf/cm ²	40~210	40~210	40~210	40~210	-	40~320	40~380
Oil Flow	LPM	10~20	10~20	10~20	10~20	-	10~20	10~20
Bucket Pin	mm	Ø30	Ø35	Ø40	Ø45	Ø45	Ø55	Ø65
Pin-to-Pin Distance	mm	140~161	175~210	195~225	265~293	342	285~328	385~448
	inch	5.5~6.3	6.9~8.3	7.7~8.9	10.4~11.5	13.5	11.2~12.9	15.2~17.6
Excavator Class	ton	1.6	2.7	3.5	5	7	8	14

Description	Unit	DMQ170	DMQ230	DMQ290	DMQ360	DMQ450	DMQ500	DMQ800
Operating Weight	kg	352	302	580	709	695	742	1,126
	lb	776	666	1,279	1,563	1,532	1,636	2,482
Setting Pressure	Kgf/cm ²	40~380	40~380	40~380	40~380	40~380	40~380	40~380
Oil Flow	LPM	10~20	10~20	10~20	10~20	10~20	10~20	10~20
Bucket Pin	mm	Ø70	Ø80	Ø90	Ø100	Ø100	Ø120	Ø130
Pin-to-Pin Distance	mm	400~450	455~510	505~530	540~560	567~590	560~580	720~725
	inch	15.7~17.7	17.9~20.1	19.9~20.9	21.3~22.0	22.3~23.2	22.0~22.8	28.3~28.5
Excavator Class	ton	17	21	25~30	32~36	45~48	50~52	80

* The specifications above are subject to change without prior notice for quality improvement.

Quick Coupler (Triple Safety)



FEATURES

- Improved durability using Hardox 400 (Hitch & Hook).
- Robust structure with Triple Safety locking system.
- Automatic locking mechanism for both front and rear without leaving the cabin.
- Rear Pin Lock allows the operator to clearly see from the cabin.



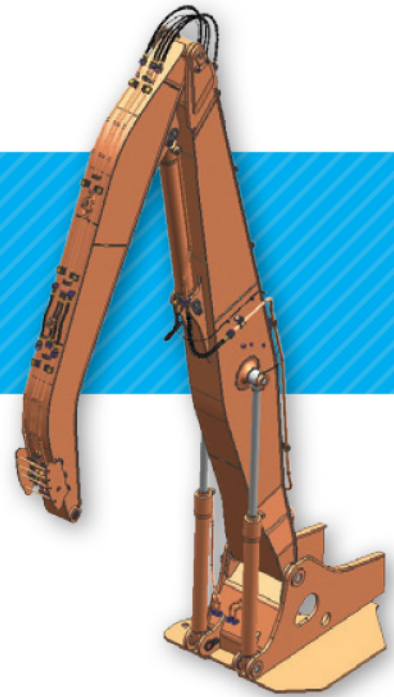
SPECIFICATIONS

Description	Unit	DMQ16TS	DMQ27TS	DMQ35TS	DMQ50TS	DMQ80TS	DMQ140TS
Operating Mode	-	Sliding(Push)+Triple Safety					
Operating Weight	kg	29	38	42	69	92	156
	lb	64	84	93	152	203	344
Setting Pressure	Kgf/cm ²	40-210	40-210	40-210	40-210	40-320	40-380
	psi	569-2,987	569-2,987	569-2,987	569-2,987	569-4,551	569-5,405
Oil Flow	LPM	10-20	10-20	10-20	10-20	10-20	10-20
	GPM	2.6-5.3	2.6-5.3	2.6-5.3	2.6-5.3	2.6-5.3	2.6-5.3
Pin Diameter	mm	Ø30	Ø35	Ø40	Ø45	Ø55	Ø65
	inch	Ø1.2	Ø1.4	Ø1.6	Ø1.8	Ø2.2	Ø2.6
Range of Center	mm	140-166	175-210	200-235	258-328	275-355	355-475
	inch	5.5-6.5	6.9-8.3	7.9-9.3	10.2-12.9	10.8-14.0	14.0-18.7
Excavator Class	ton	1.6-1.7	2.7	3.5	5	8	14
	lb	3,527-3,748	5,952	7,716	11,023	17,637	30,865

Description	Unit	DMQ170TS	DMQ230TS	DMQ290TSS	DMQ360TSS	DMQ500TSS
Operating Mode	-	Sliding(push)+Triple Safety				Swing(Push)+Triple Safety
Operating Weight	kg	255	285	560	729	754
	lb	562	628	1,235	1,607	1,662
Setting Pressure	Kgf/cm ²	40-380	40-380	40-380	40-380	40-380
	psi	569-5,405	569-5,405	569-5,405	569-5,405	569-5,405
Oil Flow	LPM	10-20	10-20	10-20	10-20	10-20
	GPM	2.6-5.3	2.6-5.3	2.6-5.3	2.6-5.3	2.6-5.3
Pin Diameter	mm	Ø70	Ø80	Ø90	Ø100	Ø120
	inch	Ø2.8	Ø3.1	Ø3.5	Ø3.9	Ø4.7
Range of Center	mm	380-510	380-500	500-570	516-595	560-625
	inch	15.0-20.1	15.0-19.7	19.7-22.4	20.3-23.4	22.0-24.6
Excavator Class	ton	17	21	25-30	32-48	50-52
	lb	37,479	46,297	55,116-66,139	70,548-105,822	110,231-114,640

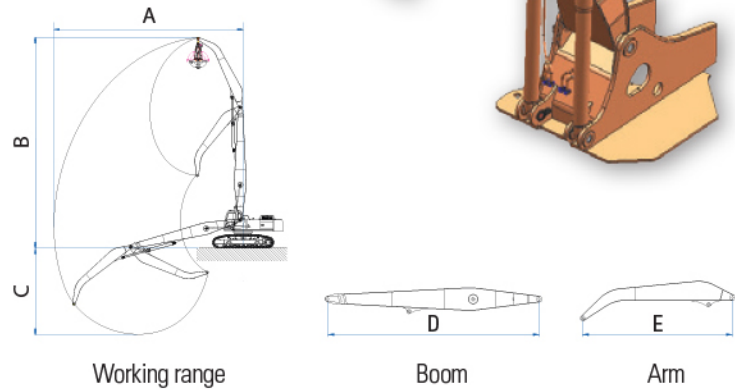
* The specifications above are subject to change without prior notice for quality improvement.

Material Handler



FEATURES

- Low-alloy steel increased maximum strength to weight.
- Standard package : Boom + Arm.
- Various kinds of grapple and clamshell bucket can be installed.



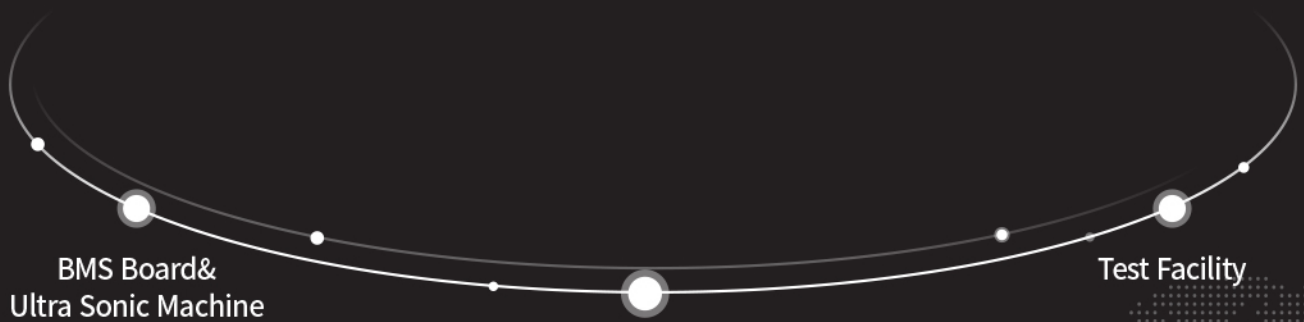
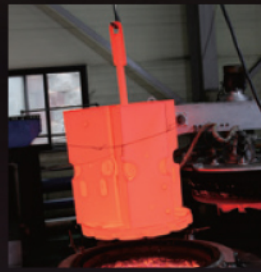
SPECIFICATIONS

Description	Unit	Wheel		Crawler						
		DMMH2140	DMMH2200	DMMH2140	DMMH2210	DMMH2290	DMMH2320	DMMH2360	DMMH2480	DMMH2520
Max. Operating Reach (A)	mm	9,060	11,000	9,060	11,100	13,060	13,680	14,360	16,800	16,800
	inch	356.7	433.1	356.7	437.0	514.2	538.6	565.4	661.4	661.4
Max. Operating Height (B)	mm	10,630	12,670	10,320	12,500	14,520	15,030	15,810	18,300	18,505
	inch	418.5	498.8	406.3	492.1	571.7	591.7	622.4	720.5	728.5
Max. Operating Depth (C)	mm	4,150	4,670	3,840	4,800	6,250	6,420	6,730	6,920	6,715
	inch	163.4	183.9	151.2	189.0	246.1	252.8	265.0	272.4	264.4
Boom Length (D)	mm	5,550	6,500	5,550	6,500	7,500	7,800	8,600	10,000	10,000
	inch	218.5	255.9	218.5	255.9	295.3	307.1	338.6	393.7	393.7
Arm Length (E)	mm	3,850	4,500	3,850	4,500	5,400	6,050	6,050	7,100	7,100
	inch	151.6	177.2	151.6	177.2	212.6	238.2	238.2	279.5	279.5
Lift Capacity at Max. Reach	ton	SNS: 1.6	SNS: 2.4	SNS: 1.6	SNS: 2.4	SNS: 2.6	SNS: 2.6	SNS: 3.0	SNS: 3.5	SNS: 3.5
Additional Counter Weight	ton	SNS: 1.0	SNS: 1.5	SNS: 1.0	SNS: 1.5	SNS: 2.0	SNS: 2.0	SNS: 2.5	SNS: 3.0	SNS: 3.0
Excavator Class	ton	14~20	20~27	14~20	21~25	27~32	32~40	32~40	40~50	50~60

* The specifications above are subject to change without prior notice for quality improvement.



Quality is our only product



BMS Board &
Ultra Sonic Machine

Test Bench

Test Facility



DAEMO

DAEMO ENGINEERING CO., LTD.

DAEMO ENGINEERING CO., LTD (HEAD QUARTER)

2611-2 JUNGWANG-DONG, SIHEUNG-CITY, GYEONGGI-DO,
REPUBLIC OF KOREA (15118)

TEL : +82-31-488-6107 FAX : +82-31-496-0066

Home page : <http://www.daemo.co.kr>

Facebook : www.facebook.com/daemoengineering

Youtube : www.youtube.com/daemoengineering

E-mail : david@daemo.co.kr (Mr. David Jung)

louis@daemo.co.kr (Mr. Louis Park)

DAEMO EUROPE N.V.

MOESTOEMAATHEIDE 15, B-2440 GEEL, BELGIUM

TEL : +32 (0) 14-59-2363 FAX : +32 (0) 14-59-0316

Mobile : +32-472-220496

E-mail : smilk@daemo.co.kr(Mr. Bread Joon)

oscar@daemo.co.kr(Mr. Oscar Na)

DAEMO AMERICA INC.

6675 DOOLITTLE AVE BLDG A, RIVERSIDE, CA 92503, USA

TEL : +1-951-688-8300 FAX : +1-951-688-8500

Mobile : +1-770-833-1083

E-mail : samyoon@daemo.co.kr(Mr. Sam Yoon)

bruce@daemo.co.kr(Mr. Bruce Jeong)

CHANGZHOU DAEMO MACHINERY CO., LTD

NO 269, HUANGHEXI RD, XUEJIA INDUSTRIAL COMPLEX,
CHANGZHOU-CITY, JIANGSU PROVINCE, CHINA

TEL : +86-519-8595-9000 FAX : +86-519-8595-9009

Mobile : +86-1880-150-2699

E-mail : yesbj@daemo.co.kr(Mr. BJ Kim)